

Introduction to ELSA

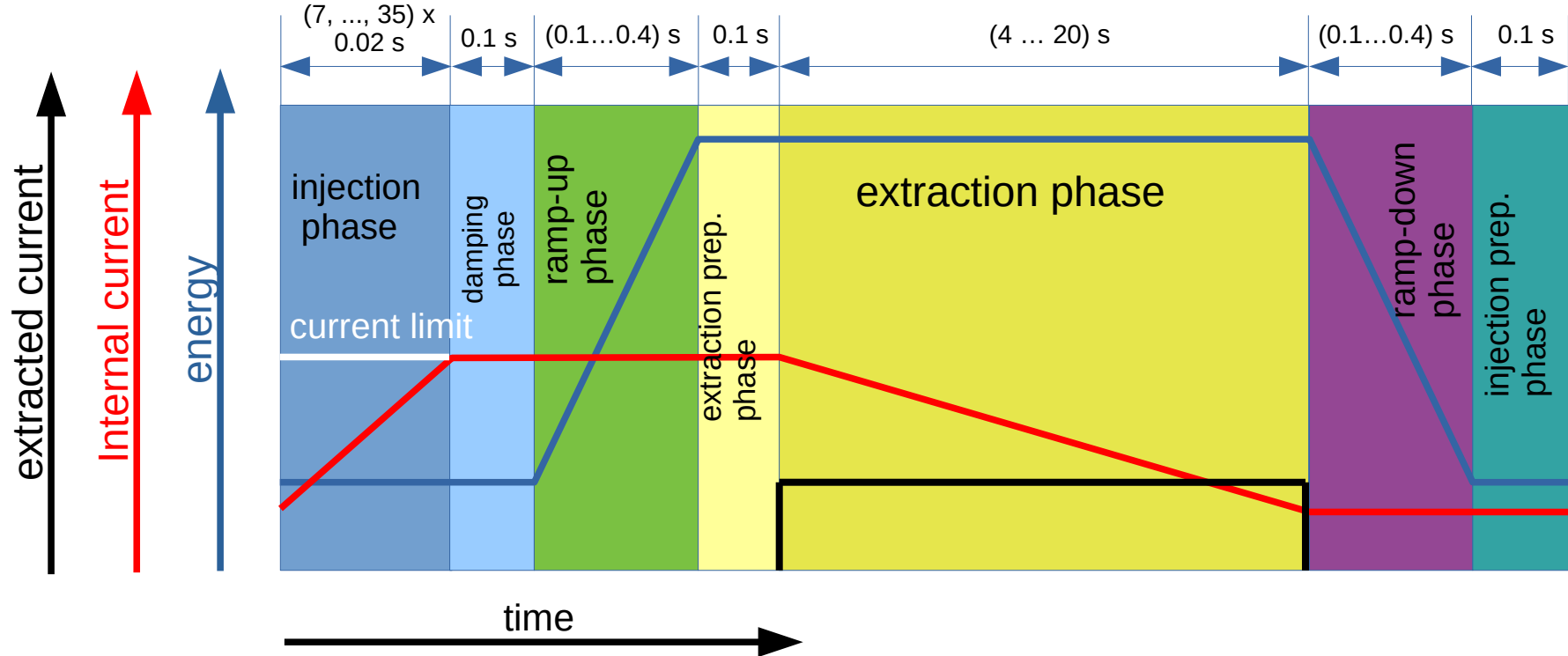
F. Frommberger

October 5th, 2021



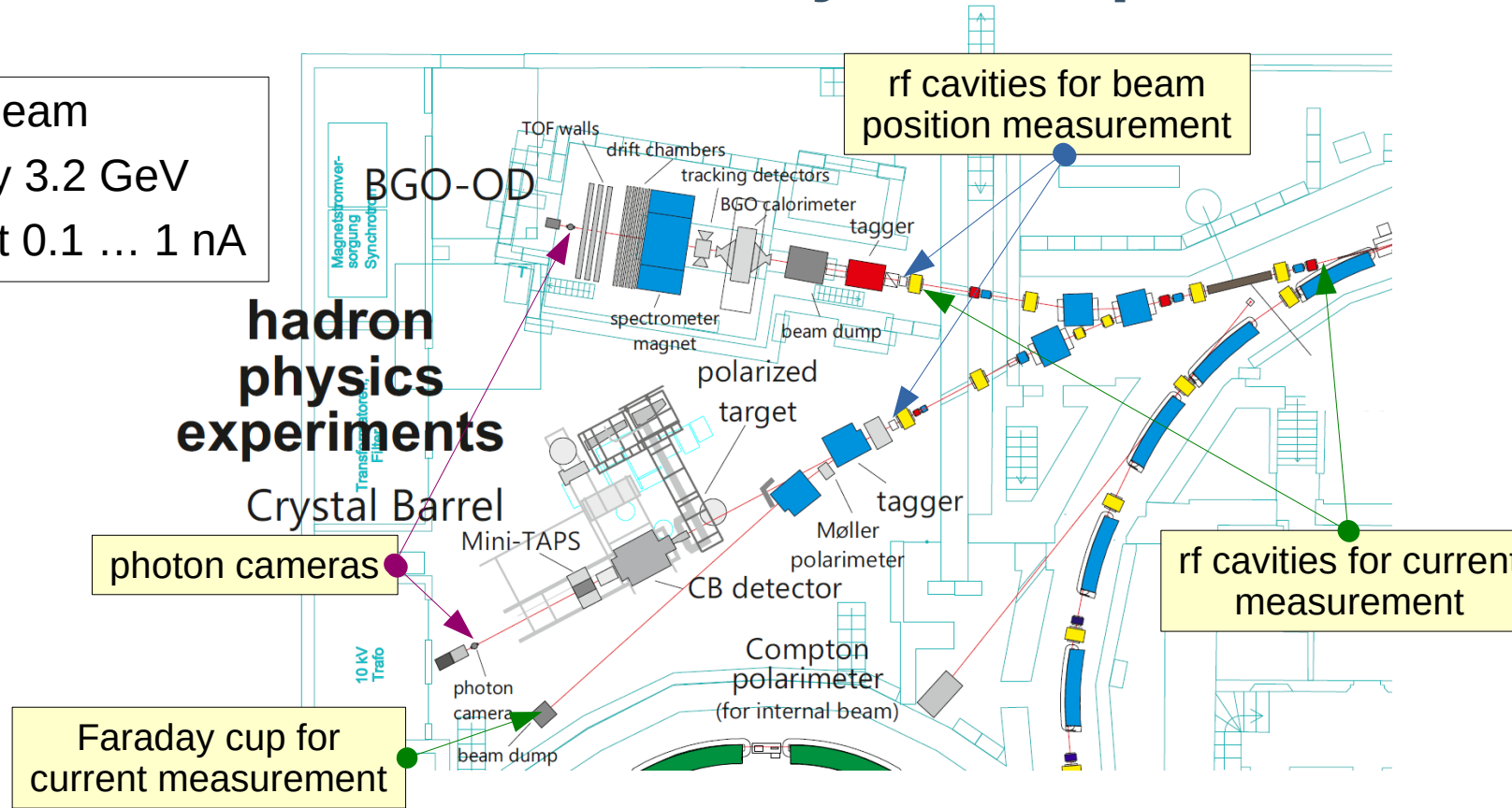


Accelerator cycle



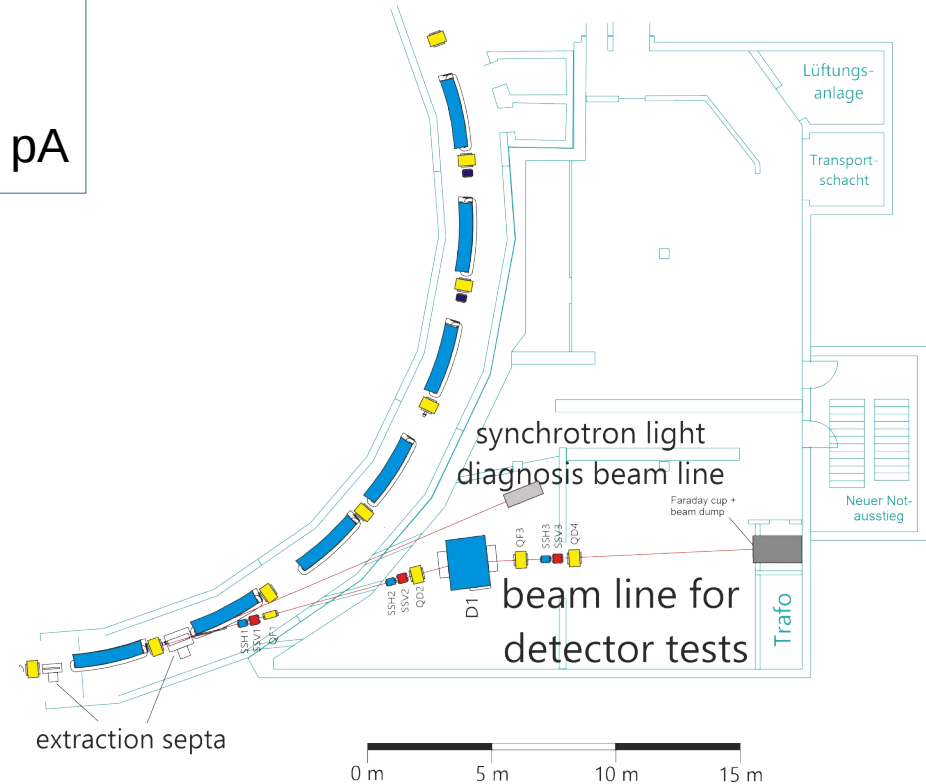
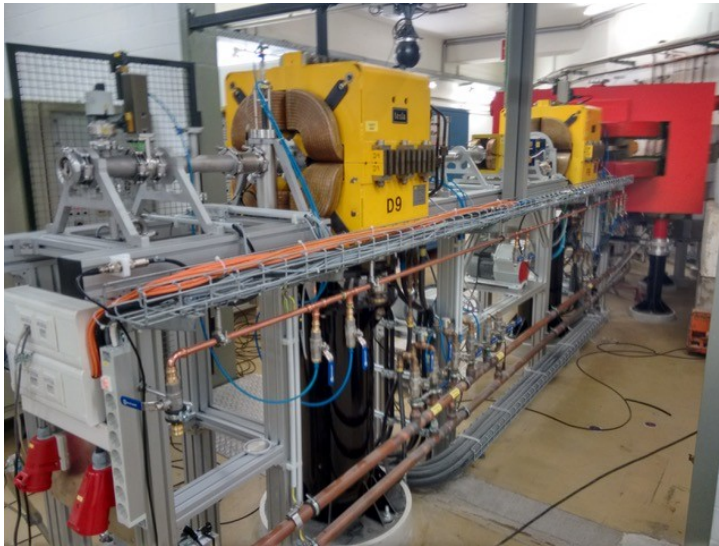
Areas with Hadron Physics Experiments

- ◆ Tagged photon beam
- ◆ Maximum energy 3.2 GeV
- ◆ Extracted current 0.1 ... 1 nA



Area for Detector Tests

- ◆ Direct electron beam
- ◆ Maximum energy: 3.2 GeV
- ◆ Extracted Current: \sim aA ... 100 pA



Thank you for your attention!

